

## **SUSPENDED® Luggage Rack & Air Channel System**

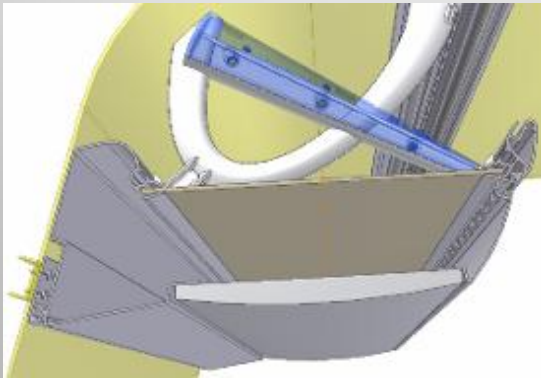
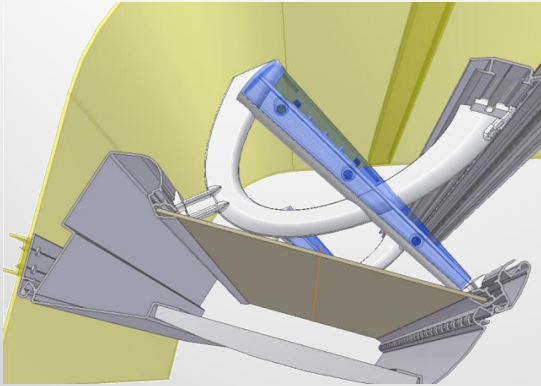
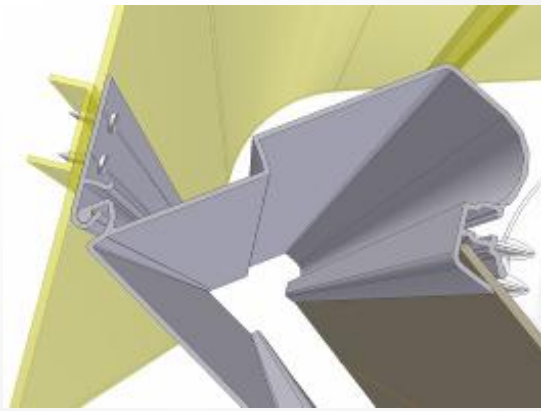
for mini/midi buses; Mercedes Benz Sprinter, Volkswagen Crafter, Iveco Daily, Renault Master, Peugeot Boxer, Citroen Jumper and Fiat Ducato.

It is specially designed as a widely configurable system with a great advantage of very short assembly time (approx 1 h) and less weight. (max 70kg in a Sprinter Extra Long Chassis)

Features;

- Different types of service sets & curtain profile above side windows.
- Patented hinge profile system for fast and easy assembly.
- LED light channel and LED back lighted brackets. (optional)
- Different types of fabric or imitation leather upholstery. (optional)
- Soft PUR headers & moquette upholstered luggage area.
- Air jets on the headers. (optional)
- ABS A/C unic connection cover. (optional)





**Patented Hinge Profile System for  
Fast and Easy Assembly**



1



2



3



4

**Different types of Service Sets;  
1.Man Type 2.New Led Type  
3.Universal 4.Cobra Type**



**Soft PUR header & optional air jet**

**A/C Unit Connection Cover (optional)**



**IDEA Otomotiv Ltd. Sti.**  
**Beşevler Küçük Sanayi Sitesi Yanı, Üçevler Mahallesi,**  
**51.Sokak No:3 Nilüfer – Bursa / TURKEY**  
**Tel: +90 224 443 46 71/72 Fax: +90 224 443 46 73**  
**E-mail: [sales@ideaotomotiv.com](mailto:sales@ideaotomotiv.com)**  
**Web : [www.ideaotomotiv.com](http://www.ideaotomotiv.com)**